

Directions to OSU's Clinical Skills Center

(aka OSU OSCE LAB)

[376 W. 10th Ave.](#)
[Columbus, OH 43210](#)

Prior Health Sciences Library
Lower Level

614-292-9435

From the North

Take I-71 south to I-270 west to Route 315 south

OR

Take Route 23 south to I-270 west to Route 315 south

OR

Take Route 33 south to I-270 east to Route 315 south

315 S to Kinnear/Olentangy Road Exit

LEFT onto Olentangy Road (stay on this until you come to King – don't make any turns)

LEFT onto King Avenue

LEFT onto Cannon Drive

RIGHT onto Medical Center Drive

LEFT onto West Park Street

Garage is on your LEFT (*See further directions below* and map on next page*)

From the South

71 N to 315 N

OR

33 N to 270 W to 71 N to 315 N

OR

33 N to 70 W to I-71 N to 315 N

315 N to Medical Center Drive Exit

Follow Medical Center Drive to West Park Street

LEFT onto West Park Street

Garage is on your LEFT (*See further directions below* and map on next page*)

From the East

70 W to 315 N

315 N to Medical Center Drive Exit

Follow Medical Center Drive to West Park Street

LEFT onto West Park Street

Garage is on your LEFT (*See further directions below* and map on next page*)

From the West

70 E to 315 N

315 N to Medical Center Drive Exit

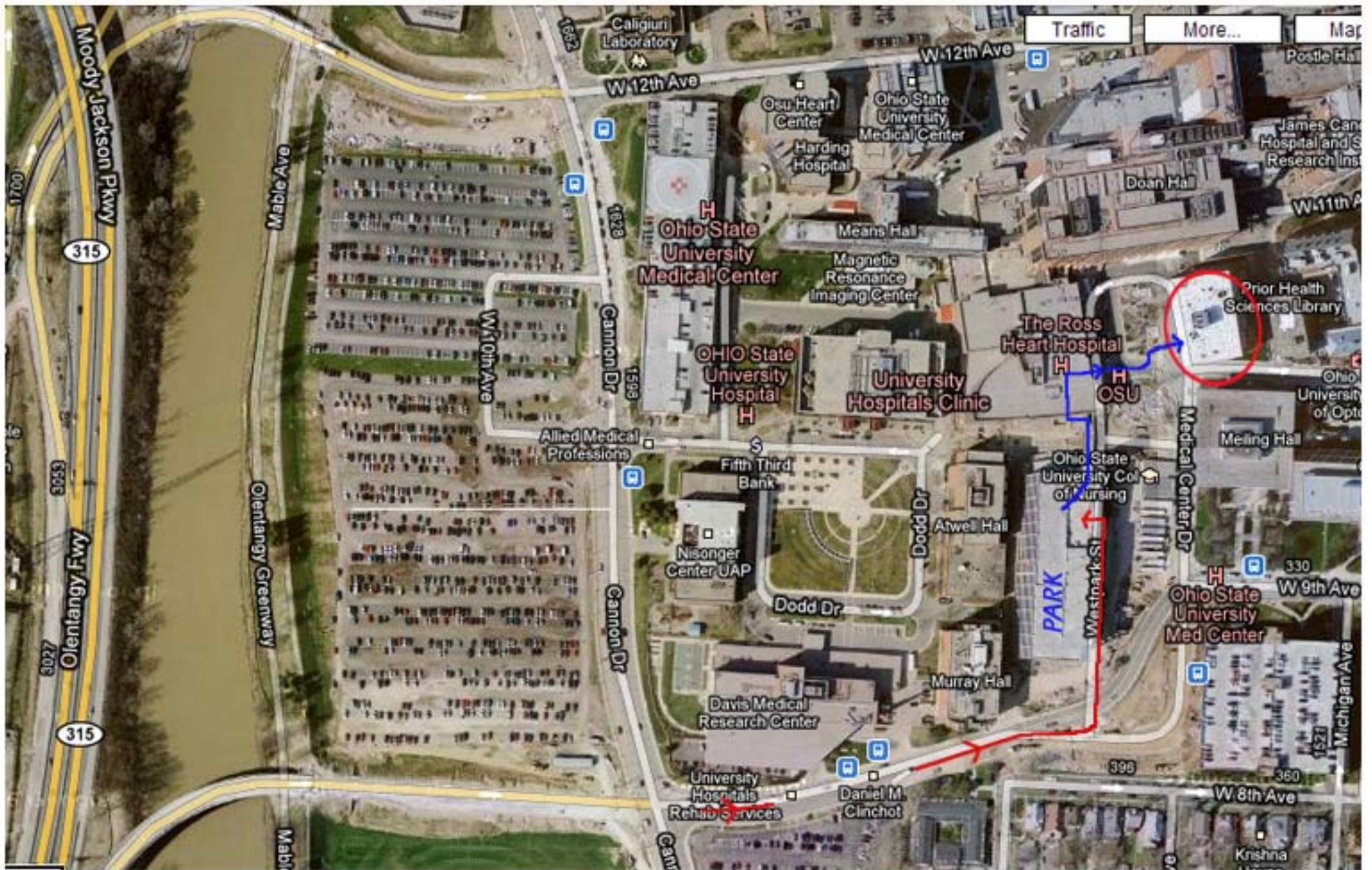
Follow Medical Center Drive to West Park Street

LEFT onto West Park Street

Garage is on your LEFT (*See further directions below* and map on next page*)

*The Clinical Skills Center is located in the lower level (basement) of the John Prior Health Sciences Library at the corner of 10th Avenue & Medical Center Drive, directly across the "plaza" (grassy area with fountains) from the Richard M. Ross Heart Hospital and catty-corner from the garage.

Once inside the Prior HS Library, you will want to take the *black* elevator that is on your left once you enter the library. (The elevator is in front of the library's circulation gates.)



KEY :

-  Driving route in from Canon Drive
-  Walking route from Parking Garage to Prior Health Sciences Library (take elevator to level 2, cross walkway, then take stairs or elevator to front door. Exit building, then cross street and quad to PHS Library)
-  Prior Health Sciences Library